

Debs Child Care News



January 2007

Volume 2, Issue 1

Child Care
Closed



January Themes

"Fun"damentals

Letters **I, N, Y**
Colors white blue
yellow

Shape crescent
Number 6

General Themes
Snowy Days
Day & Night

Holidays



Martin Luther King, Jr. Day

Special Days
Winnie the Pooh
Popcorn Day



2007

- January 15th MLK Day
- February 19th President's Day
- March 26th to March 30th
- May 25th (personal day)
- May 28th Memorial Day
- July 2nd to July 6th
- September 3rd Labor Day
- October 8th Columbus Day
- November 12th Veterans Day

Inside this issue

January Calendar	2
Schedule of Events & Birthdays	2
Notices & Remind-	2
Parent Trivia	2
Kids Trivia	3
School Calendar	4
January Songs	4
Valentine's Party	4
February Themes	4

Parent Night Out

Beginning in January 2007, I am going to offer a free night out to parents for their anniversary and for single parents, a free night out on their birthday. I will need either your anniversary date or birthday.

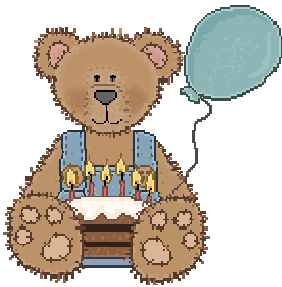


Schedule of Events

- Jan. 1st—New Years Day
- Jan. 15th— MLK Jr. Day
- Jan. 18th—Winnie the Pooh
- Jan. 19th—Popcorn Day

Birthdays

We have no birthdays this month



Notices & Reminders

Please remember to take a few minutes to sign your child in and out each day.



January 2007

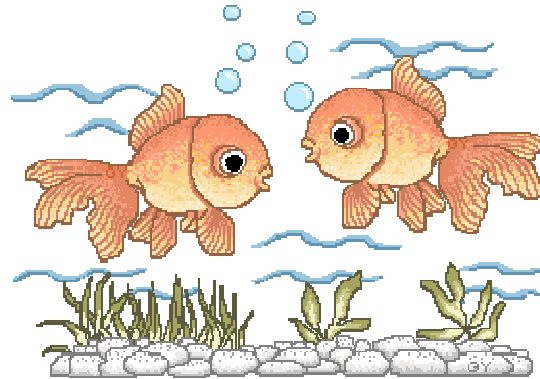
SUN	MON	TUE	WED	THU	FRI	SAT
	1	2	3	4	5	6
7	8	9	10	11	12	13
14	15	16	17	18	19	20
21	22	23	24	25	26	27
28	29	30	31			



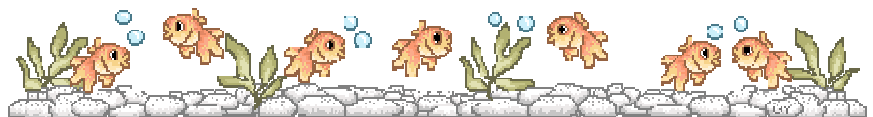
Parent Trivia



Parents: Be the first to e-mail me with the correct response to win one free day of childcare for one child.



Question: What happens to a goldfish when it is kept in a dark environment for an extended period of time?



Please note: The free day of childcare will be credited to the next month's tuition. To participate in the parent trivia, your child care account needs to be current and no late pick ups for the month in which the trivia is played. Example: January tuition needs to be paid and current as well as no late pick ups for the entire month.

Kids Trivia Fun

Kids, answer the question under your age appropriate trivia, and have your mom or dad e-mail the correct answer to me. If you do not have Internet access, please bring the answer to me or have your parents call. The first person to answer the trivia question will win a prize. The first child who sends me their answer will receive a \$5.00 gift card to Border Books & Music, a toy and stickers. Four other children will receive a toy and stickers.

PLEASE NOTE THERE IS FIVE DIFFERENT AGE GROUPS

Toddler ages 1 to 2

Name the items below



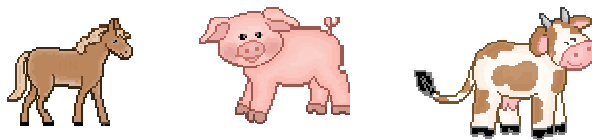
Preschool ages 3 to 4

What are the beginning sounds of the following items?

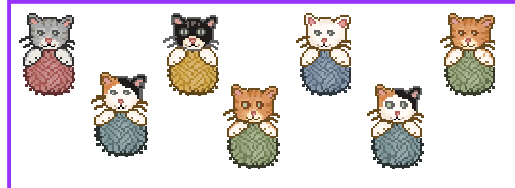


Kindergarten ages 5 to 6

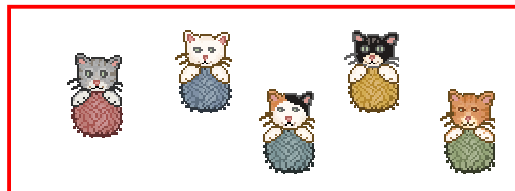
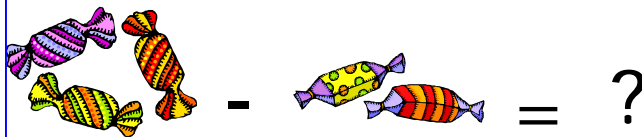
Put the following objects in alphabetical order



The purple box has 7 cats. The red box has 5. Which box has more?



Sam has 3 candies. She eats two of them. How many are left



1st to 3rd Grade - ages 6 to 8

What time will it be?

At 3:55 Joni went ice skating. Joni skated for 3 hours and 15 minutes. At what time did she finish skating?



Michael finished swimming at 3:10. He began swimming 2 hours and 20 minutes earlier. At what time did he begin to swim?

4th to 6th Grade - ages 9-12

State Trivia: [Minnesota](#)

Is Minnesota know as the land of 1,000, 10,000 or 20,000 lakes?

What is the date that Minnesota achieved Statehood?

Was it the 23rd, 32nd, 48th, or 29th state to achieve Statehood?



January 2007

School Calendar



January

January 1st-2nd - Winter Break
January 15 - MLK Day No School
January 19 - No School

February

February 16 - No School
February 19 - President's Day No School

March

March 7th to 23rd Track Break
March 26th to 30th Spring Break

April

April 6th - No School

May

May 28th - Memorial Day No School

June

June 29th - Last Day of School

August

August 15th - 1st Day of School Early Release



January Songs

10 Snowmen

Tune: Ten Little Indians

One little, two little, three little snowmen'
Four little, five little, six little snowmen;
Seven little, eight little, nine little snowmen,
Ten snowmen melting away!

Letter Songs (substitute for different letters and sounds)

Where is I?

Tune: Frere Jacques

Where is I? Where is I?
Here I am. Here I am
What sound do you make?
What sound do you make?
/i/ /i/ /i/, /i/ /i/ /i/!

Valentine's Party

We will have a Valentine's Party Wednesday February 14th at 4:00. The children will play some fun Valentine games and exchange cards. If this is not a day your child is normally not here and you wish for them to participate, ensure they are here no later than 3:45.

Valentine's Box Contest

We are having a Valentine's Box Contest. With your child, design a Valentine's box and bring it by February 12th. The children will judge and decide the winning categories.

Activities and Games

Decorate Valentine' Cookies
How Many Kisses

Heart Strings
St. Valentine's Says

February Themes

We are using *The Learning Box Preschool Curriculum*

Letter s **VHX**

Number **7**

Colors **Purple**

Red White

Shape **heart**

Holiday Themes

Groundhog Day

Valentine's Day

Presi-
dent's
Day



General Themes

Hearts and
Hugs



What Big Teeth You
Have

